

COLOR Module Series

410W⁺

Color More, Power More!

~ 80% light transmittance.

Shorter current transport path, better low-light performance, and higher power generation.

Aesthetically merge into the scenery.

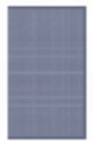
*More options:



ForestGreen



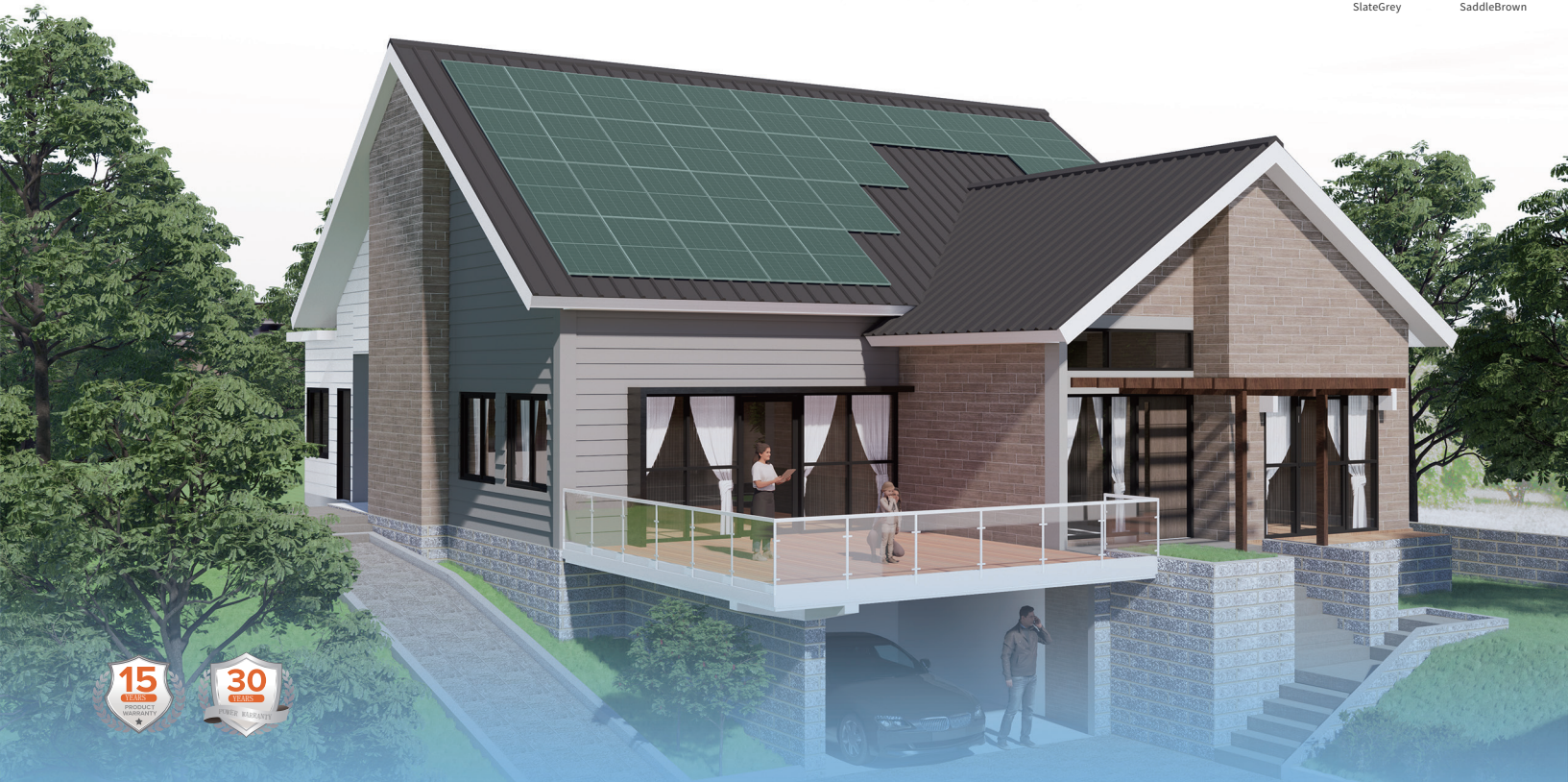
RoyalBlue



SlateGrey

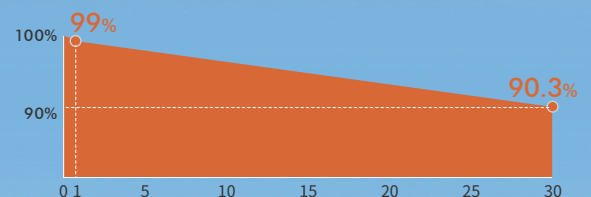


SaddleBrown



Complete System and Product Certifications:

- IEC61215, IEC61730
- ISO9001: 2015 Quality Management System
- ISO14001: 2015 Environment Management System
- ISO45001: 2018 Occupational Health and Safety
- IEC62941: 2019 Terrestrial Photovoltaic (PV) Modules-quality System for PV Module Manufacturing
- IEC/TS62994: 2019 Photovoltaic (PV) Modules Through the Life Cycle-environmental Health and Safety (EH&S) Risk Assessment-general Principles and Nomenclature



* First year power degradation ≤ 1%
 * Annual power degradation (2-30 year) ≤ 0.3%
 * Power output until the 30th year ≥ 90.3%

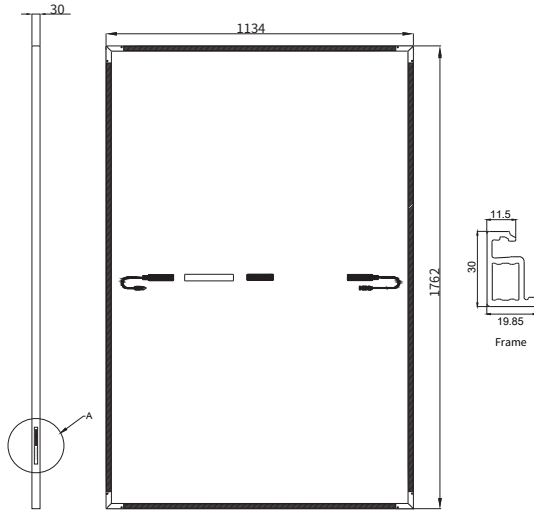
HSN-210R-S96 410W

96-Half-Cell HJT Module

- BloombergNEF Tier 1 PV module manufacturer
- Reinsurance underwritten by Ariel Re

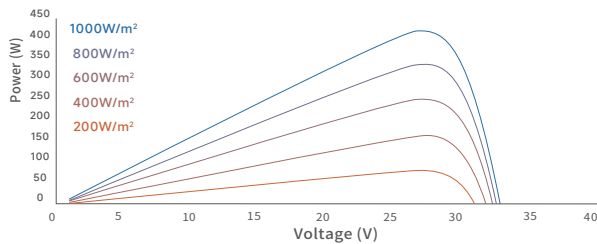
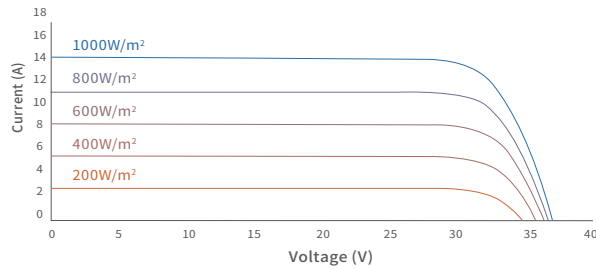
Engineering Drawings

Unit: mm



I-V Curve

(HSN-210R-S96DSC410)



Operating Conditions

Nominal Operating Cell Temp.	44±2°C
Operating Temperature	-40~+85°C
Maximum System Voltage	DC1500V (IEC)
Maximum Series Fuse Rating	30A
Tolerance of Pmax	0~+3%
Power Selection	0~+5W
Safety Class	Class II

Mechanical Characteristics

Cell Type	HJT
No. of Cells	96 (6x16)
Dimensions	1762x1134x30mm
Weight	23.5 kg
Junction Box	IP68
Cable	4mm ² ; 1250mm or customized; UV resistant
Connector	MC4 / MC4-Evo2 / MC4-Evo2A / PV-H4 / Z4S-abcd / PV-ZH202B
Frame	Glass fiber reinforced polyurethane composites frame
Max Static Load (front side/rear side)	5400Pa / 2400Pa
Glass	Dual glass, 2.0mm

Electrical Characteristics

STC

HSN-210R-S96	DSC410
Maximum Power (Pmax/W)	410
Module Efficiency (%)	20.5
Maximum Power Voltage (Vmp/V)	31.05
Maximum Power Current (Imp/A)	13.26
Open Circuit Voltage (Voc/V)	36.80
Short Circuit Current (Isc/A)	14.13

STC: AM1.5, 1000W/m², 25°C.

NOCT

Maximum Power (Pmax/W)	313
Maximum Power Voltage (Vmp/V)	29.54
Maximum Power Current (Imp/A)	10.60
Open Circuit Voltage (Voc/V)	35.12
Short Circuit Current (Isc/A)	11.29

NOCT: AM1.5, 800W/m², 20°C, 1m/s.

Temperature Characteristics

Temperature Coefficient of Pmax	-0.24%/°C
Temperature Coefficient of Voc	-0.22%/°C
Temperature Coefficient of Isc	+0.04%/°C

Packaging

	40HQ
Modules Per Pallet	36
Pallets Per Container	26
Modules Per Container	936



ANHUI HUASUN ENERGY CO., LTD. All rights reserved © 2020-2024

NO.99 Qingliu Road, Economic and Technological Development Zone, Xuancheng, Anhui, China
 Tel: 0086-563-3318095 www.huasunsolar.com
 sales@huasunsolar.com customerservice@huasunsolar.com

Any changes to the specification included in this datasheet will be made without prior notice. The final interpretation rights are reserved by HUASUN.